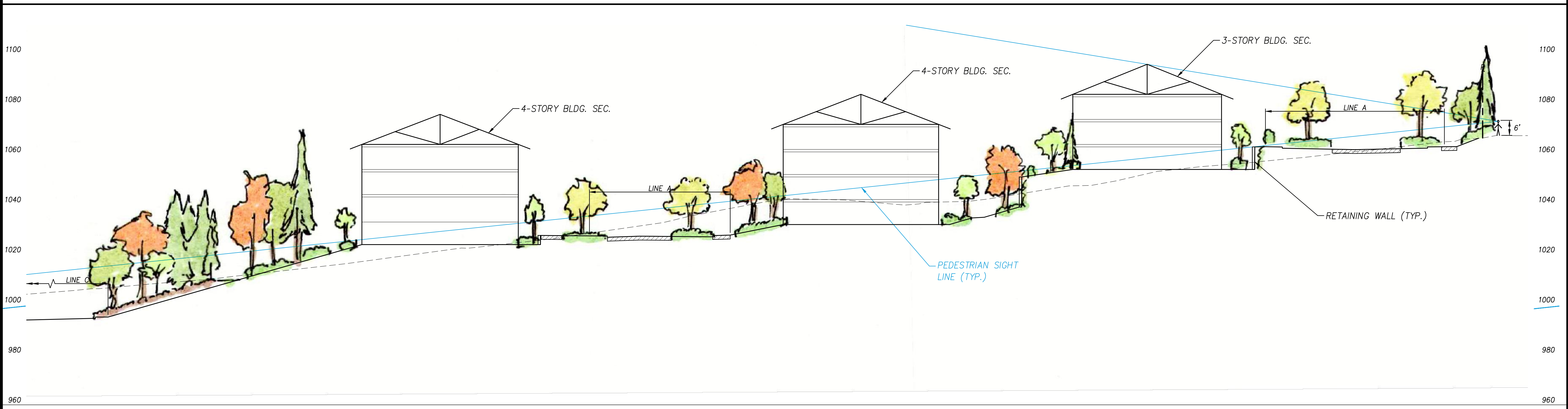


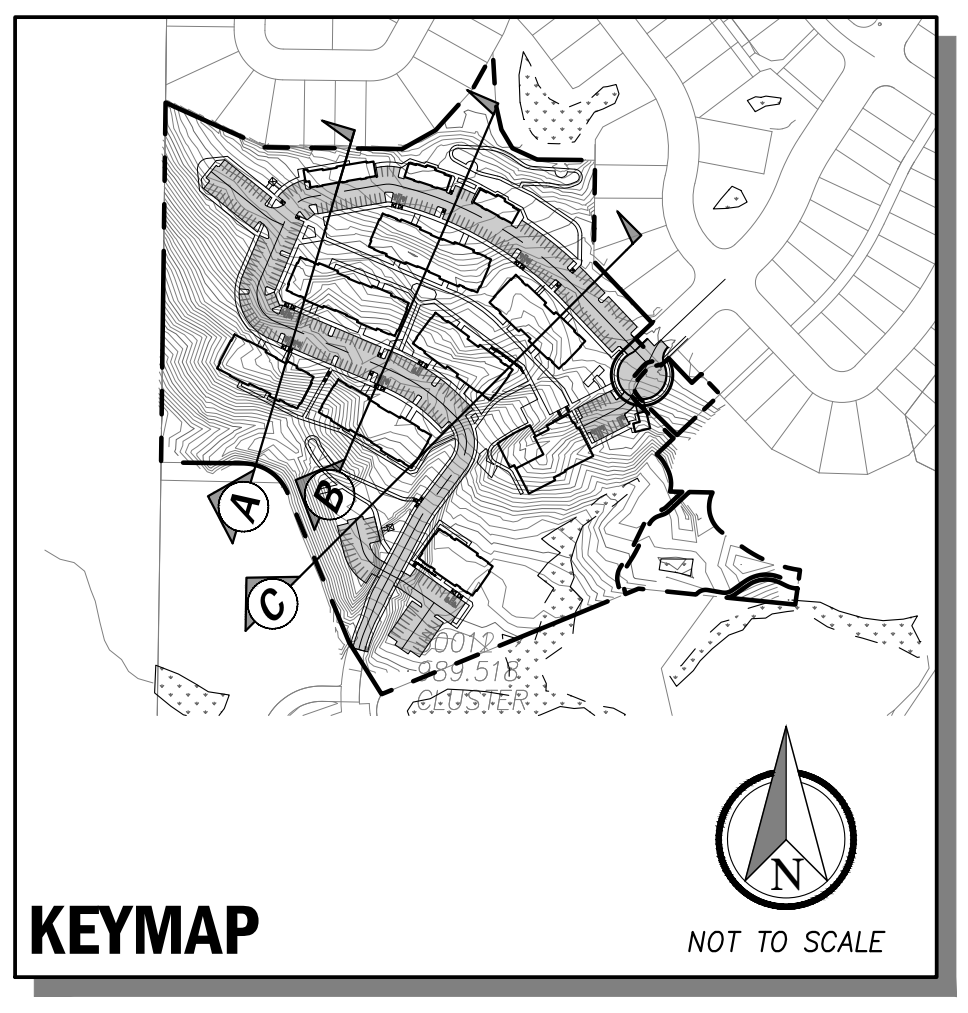
OTOP241636
 CORO241636
 CS1241636
 TBLOCK

SEC. 35, TWP 24 N, R7E W.M.



1004.2 993.88	1005.8 994.37	1007.4 997.17	1009.1 1002.87	1011.0 1008.57	1013.3 1014.28	1015.5 1019.98	1018.0 1024.00	1020.8 1024.00	1022.9 1024.00	1025.2 1024.00	1027.8 1027.53	1030.7 1027.19	1034.1 1027.22	1038.2 1027.75	1041.8 1031.51	1042.0 1032.00	1040.7 1032.00	1040.9 1032.00	1041.7 1034.76	1044.7 1051.32	1047.5 1054.00	1050.5 1054.00	1054.1 1054.00	1056.0 1054.00	1057.8 1063.01	1059.9 1062.13	1062.0 1062.10	1064.3 1063.02	1066.4 1066.33	
21+40	21+60	21+80	22+00	22+20	22+40	22+60	22+80	23+00	23+20	23+40	23+60	23+80	24+00	24+20	24+40	24+60	24+80	25+00	25+20	25+40	25+60	25+80	26+00	26+20	26+40	26+60	26+80	27+00	27+20	27+40

SECTION C-C



P:\projects\0024\16036\Draw\Exhibits\appeal_hearing\P5.02.dwg
 11/8/2017 10:43 AM MATT HOUGH

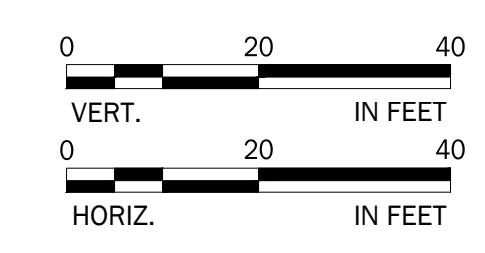
NO.	DATE	REVISION	BY	CHK.
1	11/8/17	CONSISTENCY REVIEW - APPEAL HEARING	KTF	MSH

PANORAMA APARTMENTS
 CONSISTENCY REVIEW
 EXHIBIT E CONCEPTUAL SITE SECTION
 CITY OF SNOQUALMIE KING COUNTY, WA

CLIENT
 DEVCO INC
 10900 NE 8TH STREET
 SUITE 1200
 BELLEVUE, WA 98004
 PHONE: (425) 453-9551

CPH
 CONSULTANTS
 Site Planning • Civil Engineering
 Land Use Consulting • Project Management
 14331 Wilows Rd. NE, Suite 120
 Redmond, WA 98052
 Phone: (425) 285-2300 | Fax: (425) 285-2389
 www.cphconsultants.com

PROJECT NO.
 0024-16-036
 DRAWING
 P5.02
 SHEET 6 OF 6



Copyright © 2017 CPH Consultants, LLC. All Rights Reserved.